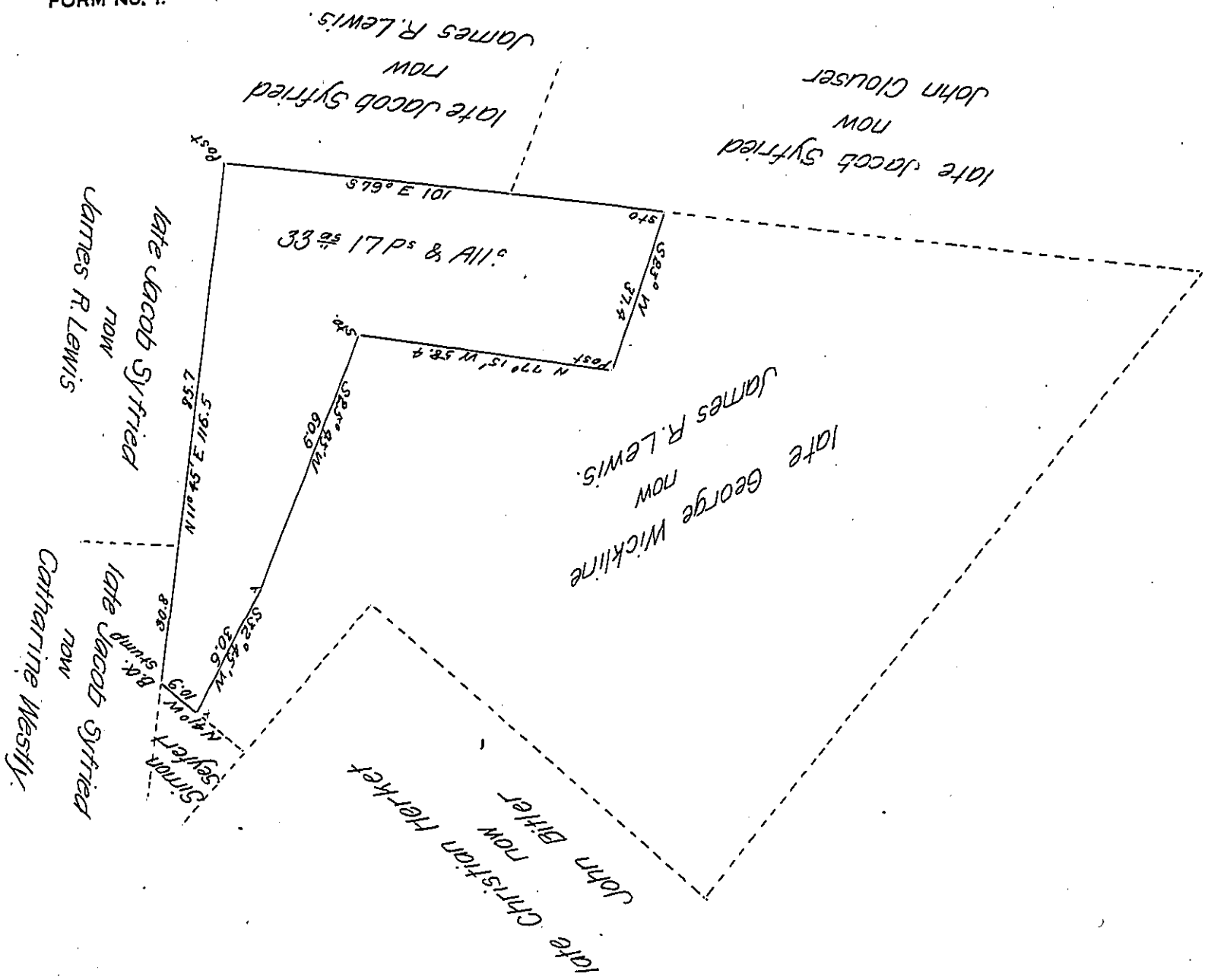


FORM NO. 1.



Situate in the Township of Robeson in the County of Berks, Containing Thirty three Acres Seventeen perches & Allowance of six per cent, part of a larger tract of One hundred and thirty seven acres & Allowance of six per cent. Surveyed unto George Wickline in pursuance of a Warrant dated the 20th day of May 1749.

Resurveyed the above for James R. Lewis the 4th day of October 1864.

To the Hon. James P. Barr

pr. Daniel S. Zacharias

Surveyor General

C.S.

Penn.^a

IN TESTIMONY that the above is a copy of the original remaining on file in the Department of Internal Affairs of Pennsylvania, made conformably to an Act of Assembly approved the 16th day of February 1833, I have hereunto set my hand and caused the Seal of said Department to be affixed at Harrisburg, this Third day of June 1907

Henry Howell

Secretary of Internal Affairs.